



Production and Industrial Facilities



Contents

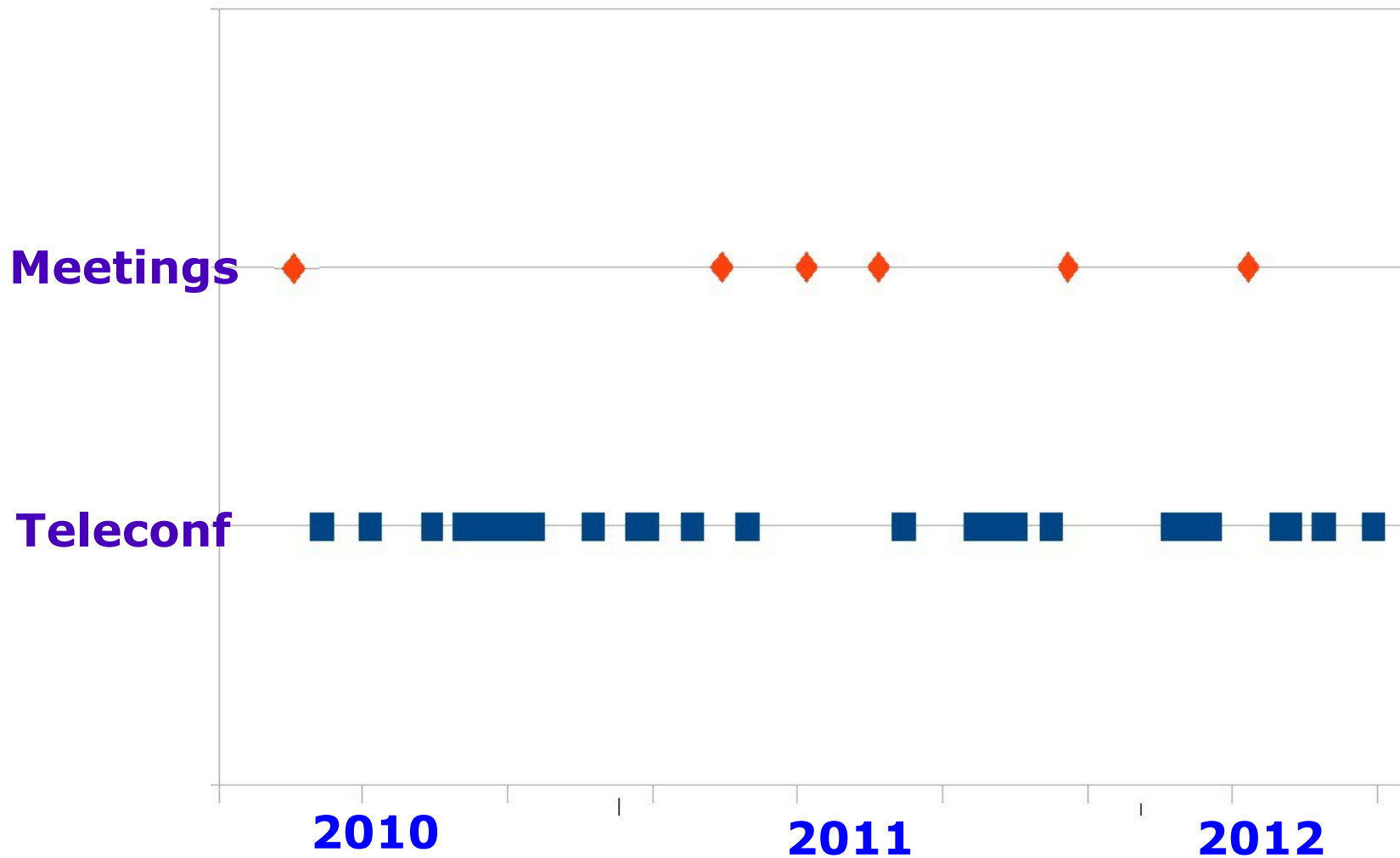
- The thematic working group
 - The data specification
 - Conclusions

1. The Thematic Working Group

The group at work (March 2011, Ranco)



(Rough) common activity log



Interactions

In addition to the “routine” (JRC, LMOs, SDICs) in the context of the data specification process

- Plan4all (former project with data modelling aspects)
 - IMPEL (Waste Sites Project)
 - CityGML
 - European Maritime Safety Agency (EMSA)
 - Regione Toscana
 - EuroFM- IFMA
- ISA (Interoperability Solutions for European Public Administrations) – core vocabulary
 - large industrial companies (chemical/facility management sector)

2. The Data Specification

Scope

Other Thematic Scopes
(e.g. LU, LC, AM)

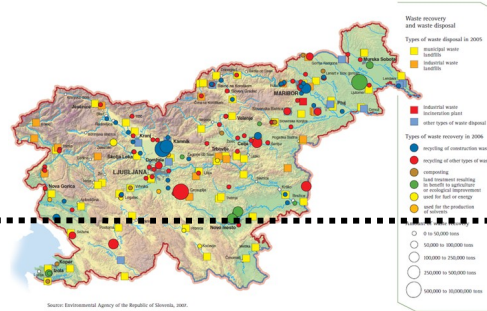
Common
Facilities
Model

Facilities - Buildings
Scope Range

Facilities
Thematic
Scope

EF,BU

Too Detailed,
Out of Scope



ActivityComplex (shared
with PF and AF)

Site

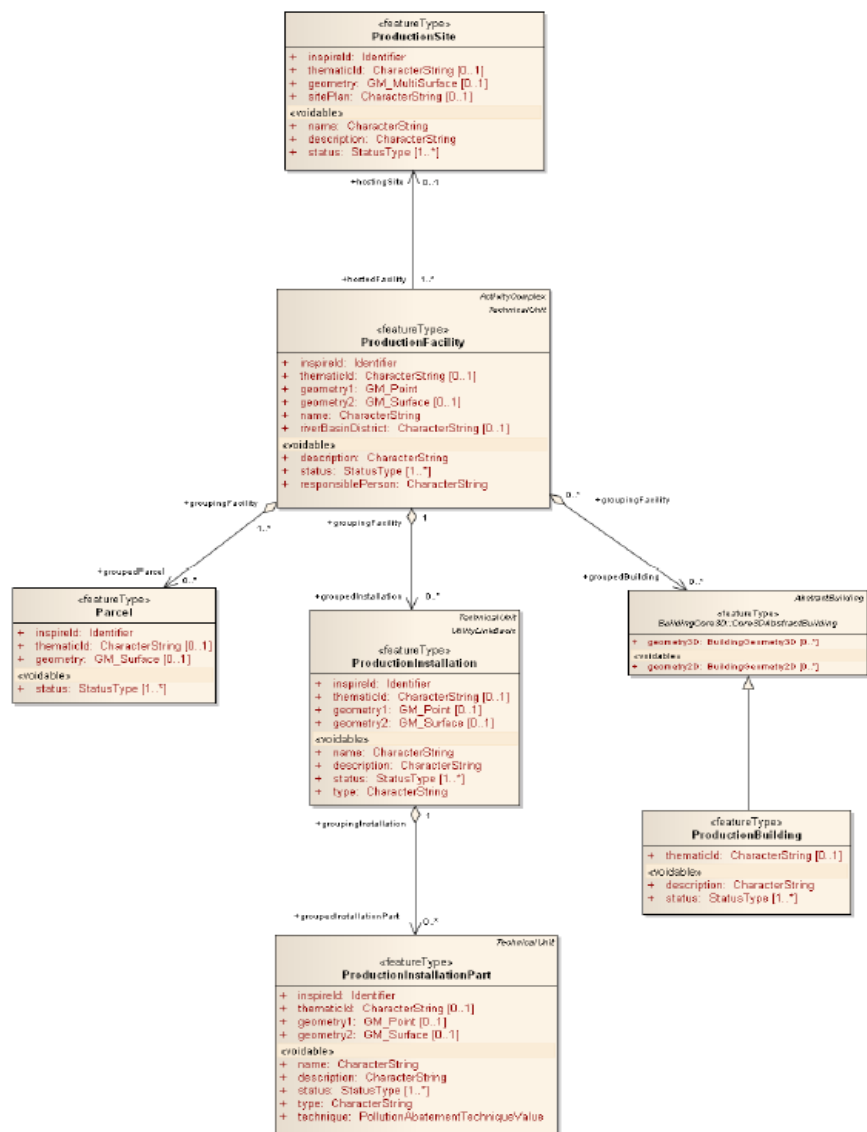
Facility,

Installation,

IndustrialParcel

Building (from BU)

Installation Part



ProductionSite

ProductionFacility

ProductionInstallation

ProductionInstallationPart

IndustrialParcel

ProductionBuilding

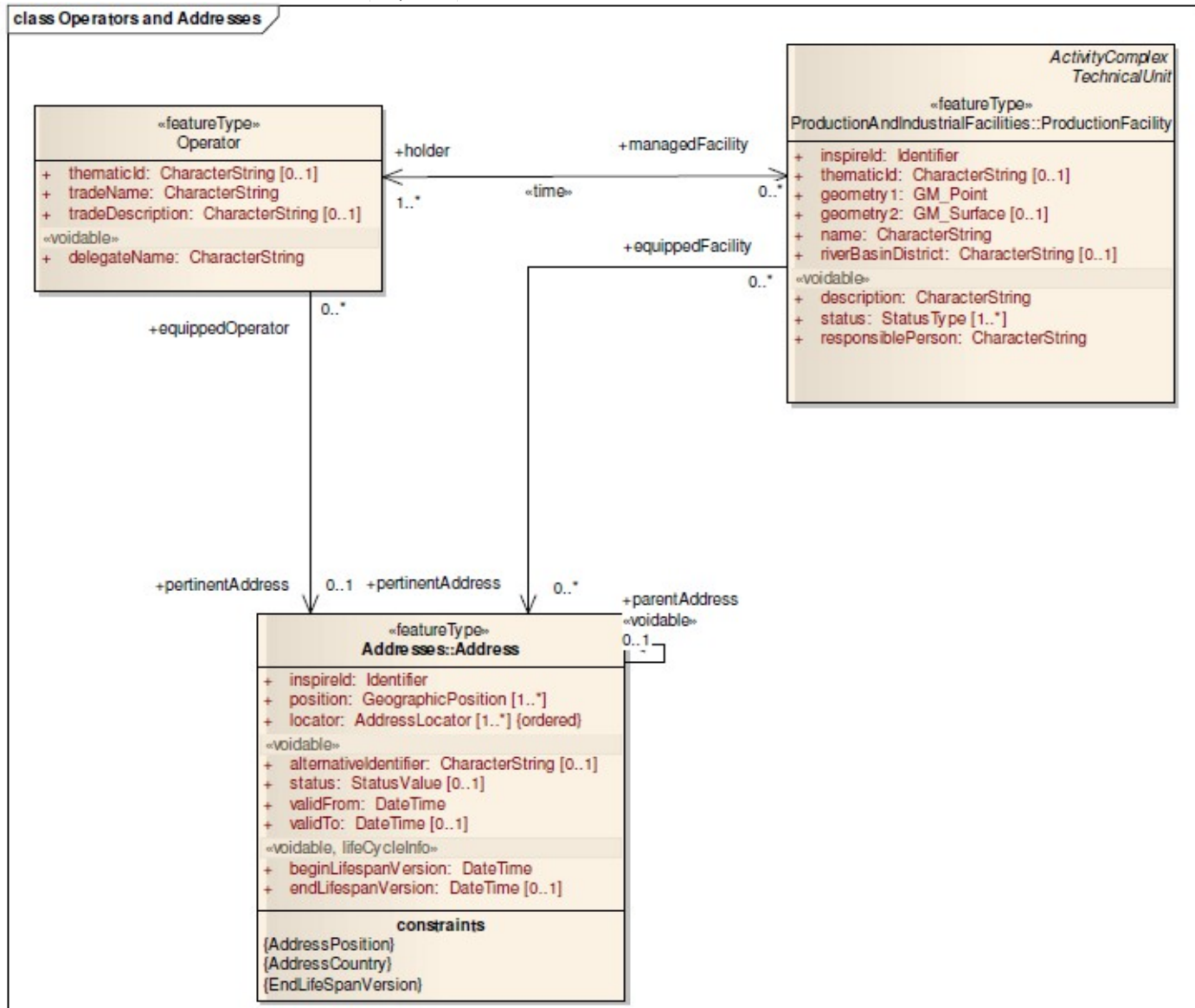
Technical Unit

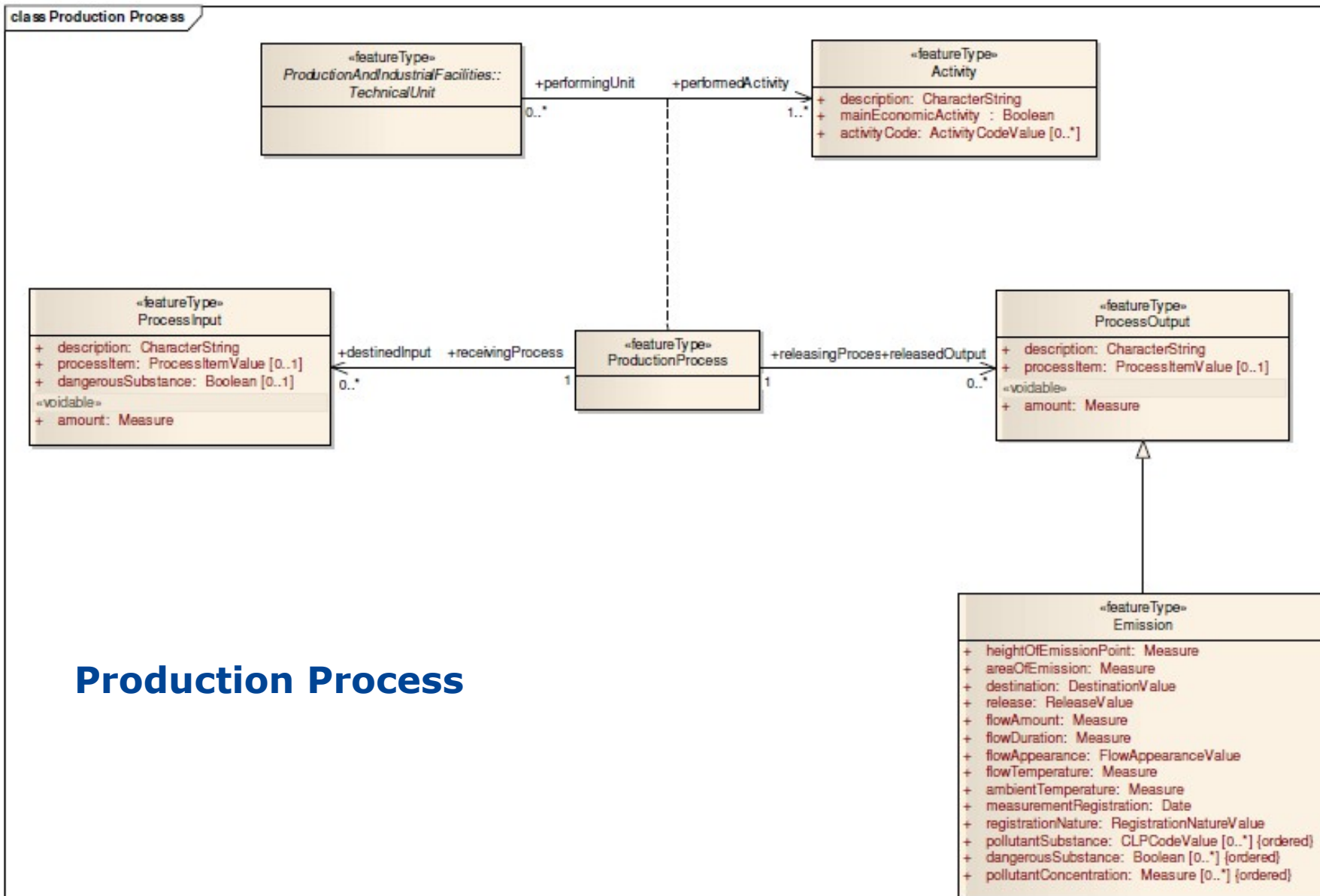
Main cross-theme links

- **AF (could almost be seen as the same)**
- **AU, CP, LU, AM**
- **US (Waste + TechnicalUnit as UtilityNetwork node)**
- **Inheriting buildings from BU**
- **Resources themes (MR/ER)**

Extension

Operators and Addresses





Production Process

Key changes from v2.0 to 3.0

Creation of core + extension

Improved reference to “ActivityComplex” (i.e. Common Facility Model)

Full harmonisation with AF in terms of data quality and metadata requirements (Chapters 7 and 8)

“TechnicalUnit” as node for utility network

Miscellaneous simplifications

Conclusions

Two very interesting years

TWG not only as “technical context”

Proposal: cursory estimate of actual value of data specification process (in-kind and contracted experts)...relates to socio-economic impacts and will serve as additional input to scoping of maintenance

Reminder: don't forget communication/outreach (“so you though you had nothing to do with INSPIRE”?)

Conclusions

Thank you for your attention!

info@pibinko.org